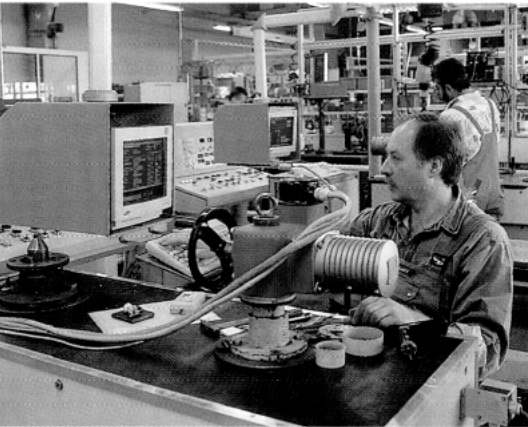


AUMA Solutions for a world in motion



After assembly, all actuators are thoroughly tested.

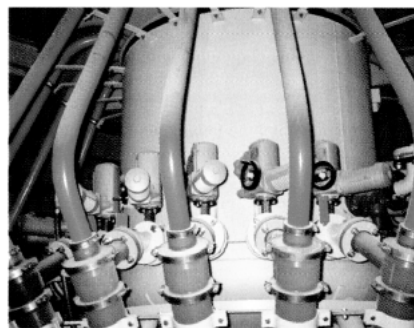
Nowadays, electronically controlled processes have a decisive impact on the quality of industrial output. New requirements in the product and process industry therefore require intelligent drive and control systems that meet the highest standards in terms of precision and security. One of the leading manufacturers of electrical actuators for the automation of industrial fittings is AUMA Werner Riester GmbH & Co. KG, which is based in Müllheim in Baden. A number of branches in Germany and around the world guarantee optimum customer proximity.



Explosion-proofed actuators mounted on a gate valves.

The company's multi-turn, part-turn valve and linear actuators are used in the energy, water, chemical and food industries and in other large-scale industrial plants. AUMA managing director Matthias Dinse explains: "The broad spectrum of our drive and control systems offers solutions for virtually all needs. We are also developing sophisticated detailed systems and integrated systems for shipbuilding and servomotors."

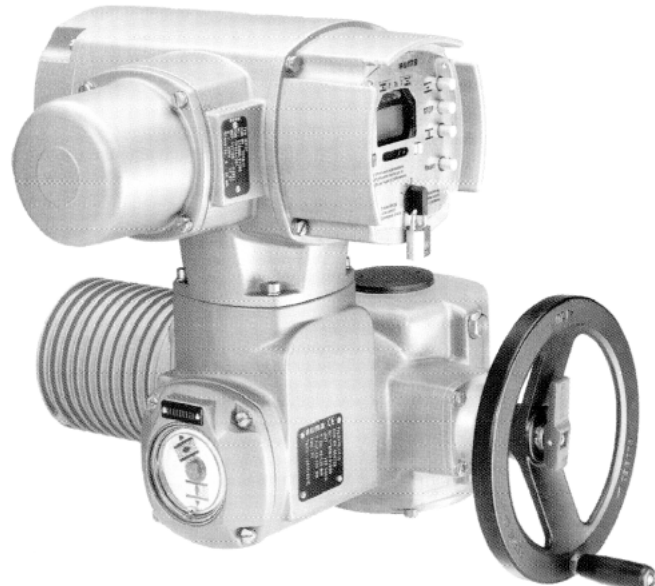
Heavy investment in research and development ensures that the expertise acquired by AUMA in its thirty years of business is continually developed.



Part turn actuators SG in a desulphuration plant.

The company's drive and control systems are now fitted with micro-processors and field bus interfaces to enable their optimum integration with modern process control systems. At the same time, AUMA ensures that its systems can function properly under extreme environmental conditions. Multi-turn actuators for a sewage plant in the United Arab Emirates have to work just as reliably as the explosion-proof drive systems in an Australian refinery.

The computer-based manufacture of drive systems and components takes place mainly at the company's own



Multi-turn actuator SA with the new integral controls AUMATIC

production facilities, where skilled employees ensure that the quality standards of AUMA's solutions are met. Henrik Newerla, managing director of AUMA Werner Riester GmbH & Co. KG, is convinced: "AUMA's ability to innovate depends on its having highly qualified and highly motivated employees. In cooperation with the the business consultants, we are continually optimising our working conditions and our productivity. The results speak for themselves:

the fact that 60 per cent of our output is exported underlines the great demand for AUMA products throughout the world."

auma[®]
Solutions for a world in motion.

AUMA Werner Riester GmbH & Co. KG
PO.Box 13 62
79373 Müllheim
Tel. + 49 7631 809-0
Fax. + 49 7631 809-250
Riester@auma.com
www.auma.com